

Conto D4-SH Multifunction Meters – DIN Rail Mounting



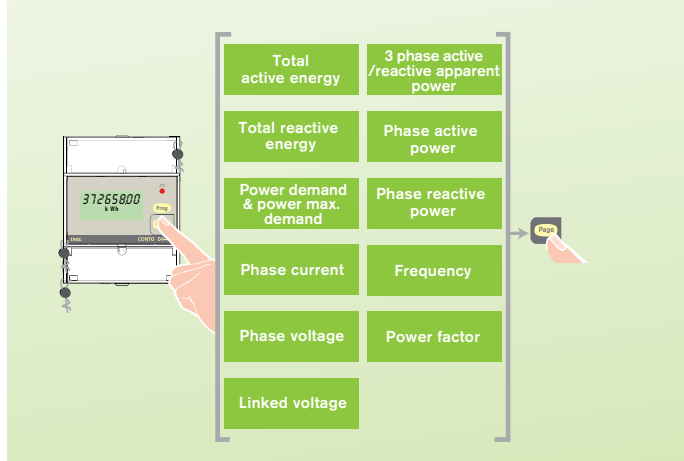
- DIN Rail mounting
- Single phase & 3 phase (3 or 4 wire) network
- Active energy class 1 (EN62053-21)
- Reactive energy class 2 (EN62053-23)
- Power demand
- Power max demand
- Phase Current
- Phase to phase and phase to neutral voltage
- Frequency
- Phase active power
- Phase reactive power
- 3 phase active/reactive and apparent power
- -/1A or -/5A ct operated
- 190 to 440V 50-60Hz
- 8 digit LCD display
- Self supplied
- Pulsed output or RS485 communications

Conto 72-SH Multifunction Meters – Panel Mounting

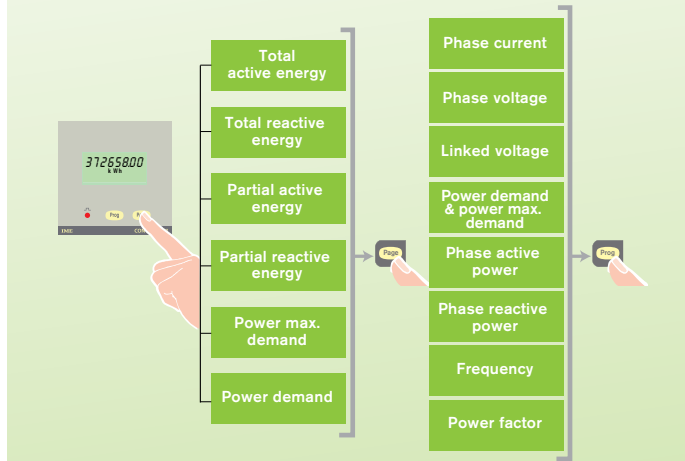


- 72 x 72mm flush panel mounting
- Single phase & 3 phase (3 or 4 wire) network
- Active energy class 1 (EN62053-21)
- Reactive energy class 2 (EN62053-23)
- Power demand
- Power max demand
- Partial active energy (resettable)
- Partial reactive energy (resettable)
- Phase Current
- Phase to phase and phase to neutral voltage
- Frequency
- Phase active power
- Phase reactive power
- 3 phase active/reactive and apparent power
- -/1A or -/5A ct operated
- 190 to 440V 50-60Hz
- 8 digit LCD display
- Self supplied
- Pulsed output or RS485 communications

Diagrams



Diagrams



How to Order / Model Reference

eg **CE4DT 1 4 A 2 / 770**

Model	CE4DT									
Range		1								
1A or 5A input			1							
Voltage				2						
190-440V phase - phase					A					
Supply										
Self supplied						2				
Output							4			
Pulsed output										770
RS485 communication										
End Code										

How to Order / Model Reference

eg **CE72S 1 4 A 2 / 770**

Model	CE72S									
Range		1								
1A or 5A input			1							
Voltage				2						
190-440V phase - phase					A					
Supply										
Self supplied						2				
Output							4			
Pulsed output										770
RS485 communication										
End Code										